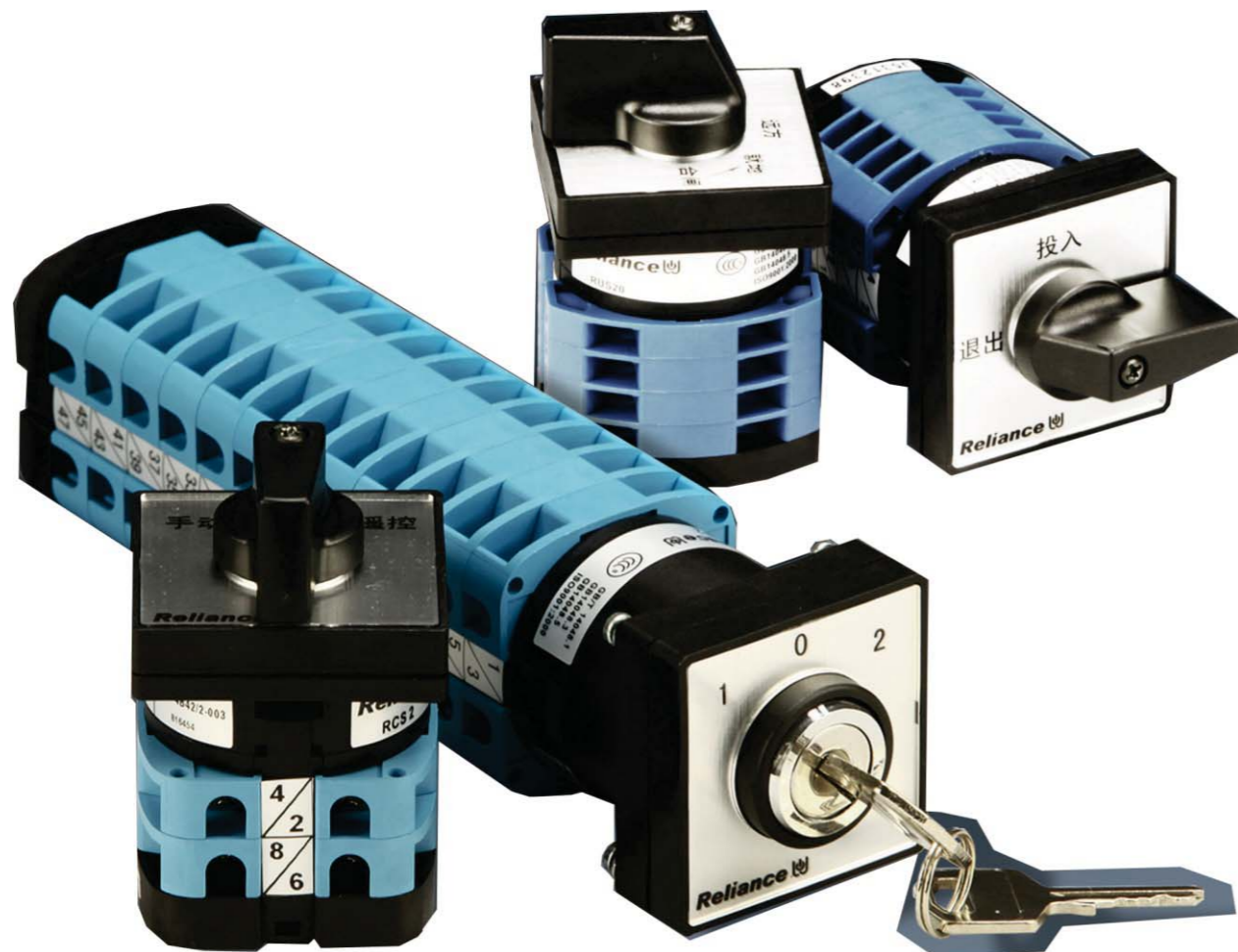


SERIES CAM SWITCHES

General Information

- > Applications:
The RCS2 series cam switches are applicable for use with the AC50-60 Hz, AC690V and DC 400V, acting as general control switches, equipment test switches, motor control switches and transitional or micro-motor control switches for electrical test meters.
- > Wire connection modes (with self-locking fuction):
copper wire connection
combination screw wire connection
- > Cam switches are subjected to RoHS compliance.



Technical data

Rated insulation voltage	V	690
Rated thermal current	A	20
Rated frequency	Hz	DC or 50/60
Rated short-time current	A	100/1s
Power frequency withstand voltage	V	2500/1min
Impulse withstand voltage (1.2/50 μs)	V	4000
Mechanical life	times	300,000
DC Electrical life (DC-13, t=20ms)	times	100,000
AC Electrical life (AC-15, cosφ=0.3)	times	200,000
AC-21	20A	DC-21
AC-15, Cosφ=0.3	24V 20A	Serial contact
	48V 14A	Voltage
	110V 10A	1 2 3 4
	220V 6A	24 48 72 95 12A
	380V 4A	48 60 95 110 7A
AC-3	3KW	110 220 300 3A
AC-4	3KW	220 440 1.3A
		440 06A
		DC-13, τ=20ms
		Serial contact
		Voltage
		1 2 3 4
		24 48 72 95 8A
		48 60 95 110 5A
		110 220 300 2A
		220 440 08A
		440 0.35A
Limiting temperature	℃	-40/70

Working conditions:

- Temperature: -25℃ ~+55℃
- Relative humidity: ≤90%
- Altitude: ≤ 2000m
When the altitude is more than 2000m, air cooling effect and dielectric strength degradation will make the rated voltage reduce.
- Installation category: III
- Pollution class: 3

Standards

- GB 14048.1/3/5
- IEC60947-1/3/5

Certifications

- CCC / ROHS



RCS 2 Features

- > Combination screw wire connection are in simple structure. The connection status is easy for observation. Spring washers make deformation during compression, which achieves self-locking.
- > Serial contacts are made of high-quality silver-nickel alloys, with highly conductive property, arc-ablation resistance, anti-abrasion and corrosion resistance.
- > Insulation materials are imported nylon PA 66, which guarantees insulation parts with good insulating property, fire resistance, flexibility, aging resistance and highly corrosion resistance. The insulation materials will not be affected by termites, anaerobe and fungus. They are also well against most type of oils, lipids, and commonly used detergent, like alcohol and carbon tetrachloride, etc.
- > The thickness of each layer are 10mm, and combinations of 12 layers are provided as upper limit.

Models and Code implication

R CS 2 □ □ □□ / □ □ □□-□□□-□□□

1 2 3 4 5 6 7 8 9 10 11

- 1 Company code
- 2 Product name
- 3 Series code
- 4 Angle code
- 5 Feature code
- 6 Board type
- 7 Layers
- 8 Letter B indicates panel size is 64*64. If there is no letter B, the panel size is 48*48.
- 9 HL indicates key type.
- 10 Contact code
- 11 LED indicator



RUS 20 Features

- > RUS20 initially adopts wire connection structure of copper frame, which has won several invention patents both at home and abroad. It has compact structure, and the thickness of each layer is 6.5mm, which is 50% thicker than traditional one.
- > Wire connection structure of copper frame has large contact pressure, self-locking function. It needs no prefabricated end, which makes much convenience and wiring efficiency.
- > It supports long-term use under harsh environmental conditions of moist and salt-mist, etc.
- > Serial contacts are made of high-quality silver-nickel alloys, with highly conductive property, arc-ablation resistance, anti-abrasion and corrosion resistance. Insulation materials are imported nylon PA 66, which guarantees insulation parts with good insulating property, fire resistance, flexibility, aging resistance and highly corrosion resistance. The insulation materials will not be affected by termites, anaerobe and fungus. They are also well against most type of oils, lipids, and commonly used detergent, like alcohol and carbon tetrachloride, etc.
- > The combination of 20 layers are provided as upper limit.

Models and Code implication

R US 20A □ □ □□ / □ □ □□-□□□-□□□

1 2 3 4 5 6 7 8 9 10 11

- 1 Company code
- 2 Product name
- 3 Series code
- 4 Angle code
- 5 Feature code
- 6 Board type
- 7 Layers
- 8 Letter B indicates panel size is 64*64. If there is no letter B, the panel size is 48*48.
- 9 HL indicates key type.
- 10 Contact code
- 11 LED indicator

Parameter Selection Table

Feature code		Angle code																		
		3			4			6			9									
Types (grade code)	Self-reset type	A				0°~30°							0°~45°							
		B				30°→0°~30°							0°				45°→0°~45°			
		C				0° 30°							0° 45°				0° 60°			0° 90°
		D				30° 0° 30°							45° 0° 45°				60° 0° 60°			90° 0° 90°
		E				30° 0° 30° 60°							45° 0° 45° 90°				90° 30° 30° 90°			90° 0° 90° 180°
		F				60° 30° 0° 30° 60°							90° 45° 0° 45° 90°				90° 30° 30° 90° 150°			
		G				60° 30° 0° 30° 60° 90°							90° 45° 0° 45° 90° 135°				120° 90° 30° 30° 90° 150°			
		H				90° 60° 30° 0° 30° 60° 90°							90° 45° 0° 45° 90° 135° 180°				120° 90° 0° 60° 120°			
		I				90° 60° 30° 0° 30° 60° 90° 120°							90° 45° 0° 45° 90° 135° 180° 225°				120° 90° 0° 60° 120° 180°			
	Pre-set type	J	120° 90° 60° 30° 0° 30° 60° 90° 120°										135° 90° 45° 0° 45° 90° 135°							
		K	120° 90° 60° 30° 0° 30° 60° 90° 120° 150°										135° 90° 45° 0° 45° 90° 135° 180°							
		L	150° 120° 90° 60° 30° 0° 30° 60° 90° 120° 150°																	
		M	150° 120° 90° 60° 30° 0° 30° 60° 90° 120° 150° 180°																	
		N				30° 0° 30° 60° 90° 120° 150° 180°														
		P				30° 0° 30° 60° 90° 120° 150° 180° 210° 240°														
		Q				30° 0° 30° 60° 90° 120° 150° 180° 210° 240° 270° 300°														
		R				90° 60° 30° 0° 30° 60° 90° 120° 150°														
		S				90° 60° 30° 0° 30° 60° 90° 120° 150° 180°														
T				90° 60° 30° 0° 30° 60° 90° 120° 150° 180° 210°																
U				90° 60° 30° 0° 30° 60° 90° 120° 150° 180° 210° 240°												30° 30°		45° 45°		
Pre-set/ Self-reset type	V				30°→0° 60°							90° 0°~45°								
	W											135°→90° 0°~45°								

Handle types

	Color	Type	Order No.	Size
		ROH1	817991	
		ROH2	817992	
		ROH3	817993	
		ROH5	817995	
		ROH7	817997	

Board types (Pre-set angles are, in order, 30°, 45°, 60°, 90°.)

Self-reset

00

Pre-set 30°

31 32 33 37

Pre-set 45°

41 42 43 53 46 85

Pre-set 60°

61 62 63

Pre-set 90°

91 92 95

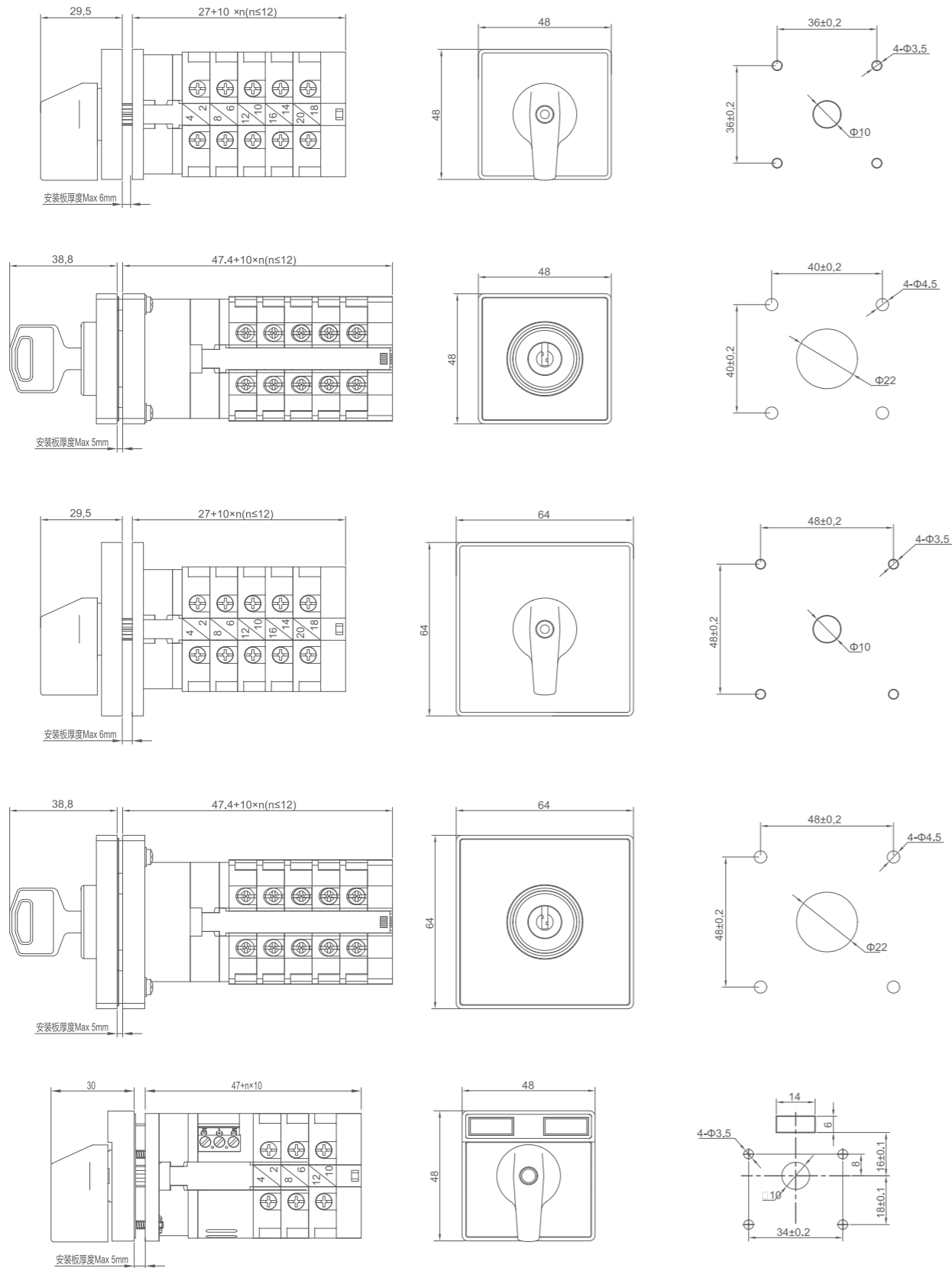
> Engraving contents on the board can be customized by customers' requirements.

Layer Parameter Note: The numbers of layers can be customized by customers' requirements.

Board indicator	1	0	2	Type	Order No.
Handle angle	45°	0°	45°		
Handle direction	↘	↑	↙		
Layer 1	1-2 3-4	×	×	RUS20A4D42/1	890201
Layer 2	5-6 7-8	×	×	RUS20A4D42/2	890202
Layer 3	9-10 11-12	×	×	RUS20A4D42/3	890203
Layer 4	13-14 15-16	×	×	RUS20A4D42/4	890204
Layer 5	17-18 19-20	×	×	RUS20A4D42/5	890205
Layer 6	21-22 23-24	×	×	RUS20A4D42/6	890206
Layer 7	25-26 27-28	×	×	RUS20A4D42/7	890207
Layer 8	29-30 31-32	×	×	RUS20A4D42/8	890208
Layer 9	33-34 35-36	×	×	RUS20A4D42/9	890209
Layer 10	37-38 39-40	×	×	RUS20A4D42/10	890210
Layer 11	41-42 43-44	×	×	RUS20A4D42/11	890211
Layer 12	45-46 47-48	×	×	RUS20A4D42/12	890212
Layer 13	49-50 51-52	×	×	RUS20A4D42/13	890213
Layer 14	53-54 55-56	×	×	RUS20A4D42/14	890214
Layer 15	57-58 59-60	×	×	RUS20A4D42/15	890215
Layer 16	61-62 63-64	×	×	RUS20A4D42/16	890216
Layer 17	65-66 67-68	×	×	RUS20A4D42/17	890217
Layer 18	69-70 71-72	×	×	RUS20A4D42/18	890218
Layer 19	73-74 75-76	×	×	RUS20A4D42/19	890219
Layer 20	77-78 79-80	×	×	RUS20A4D42/20	890220

Board indicator	1	0	2	Type	Order No.
Handle angle	45°	0°	45°		
Handle direction	↘	↑	↙		
Layer 1	1-2 3-4	×	×	RCS2 4D42/1	816145
Layer 2	5-6 7-8	×	×	RCS2 4D42/2	816146
Layer 3	9-10 11-12	×	×	RCS2 4D42/3	816147
Layer 4	13-14 15-16	×	×	RCS2 4D42/4	816148
Layer 5	17-18 19-20	×	×	RCS2 4D42/5	816149
Layer 6	21-22 23-24	×	×	RCS2 4D42/6	816150
Layer 7	25-26 27-28	×	×	RCS2 4D42/7	816151
Layer 8	29-30 31-32	×	×	RCS2 4D42/8	816152
Layer 9	33-34 35-36	×	×	RCS2 4D42/9	816173
Layer 10	37-38 39-40	×	×	RCS2 4D42/10	816174
Layer 11	41-42 43-44	×	×	RCS2 4D42/11	816175
Layer 12	45-46 47-48	×	×	RCS2 4D42/12	816176

RCS2 Appearance and installation size



RUS20 Appearance and installation size

